



LT-β Polyclonal Antibody

Catalog No	YP-Ab-16089
Isotype	IgG
Reactivity	Human;Rat;Mouse;
Applications	WB;IHC;IF;ELISA
Gene Name	LTB TNFC TNFSF3
Protein Name	Lymphotoxin-beta (LT-beta) (Tumor necrosis factor C) (TNF-C) (Tumor necrosis factor ligand superfamily member 3)
Immunogen	Synthetic peptide from human protein at AA range: 41-90
Specificity	The antibody detects endogenous LT-β
Formulation	Liquid in PBS containing 50% glycerol, 0.5% BSA and 0.02% sodium azide.
Source	Polyclonal, Rabbit,IgG
Purification	The antibody was affinity-purified from rabbit antiserum by affinity-chromatography using epitope-specific immunogen.
Dilution	IHC-p 1:50-200, ELISA 1:10000-20000, WB 1:500-2000. IF 1:50-200
Concentration	1 mg/ml
Purity	≥90%
Storage Stability	-20°C/1 year
Synonyms	Lymphotoxin-beta (LT-beta;Tumor necrosis factor C;TNF-C;Tumor necrosis factor ligand superfamily member 3)
Observed Band	
Cell Pathway	Membrane ; Single-pass type II membrane protein .
Tissue Specificity	Spleen and thymus.
Function	function:Cytokine that binds to LTBR/TNFRSF3. May play a specific role in immune response regulation. Provides the membrane anchor for the attachment of the heterotrimeric complex to the cell surface. Isoform 2 is probably non-functional.,similarity:Belongs to the tumor necrosis factor family.,subunit:Heterotrimer of either two LTB and one LTA subunits or (less prevalent) one LTB and two LTA subunits.,tissue specificity:Spleen and thymus.,
Background	Lymphotoxin beta is a type II membrane protein of the TNF family. It anchors lymphotoxin-alpha to the cell surface through heterotrimer formation. The predominant form on the lymphocyte surface is the lymphotoxin-alpha 1/beta 2 complex (e.g. 1 molecule alpha/2 molecules beta) and this complex is the primary ligand for the lymphotoxin-beta receptor. The minor complex is lymphotoxin-alpha 2/beta 1. LTB is an inducer of the inflammatory response system and involved in normal development of lymphoid tissue. Lymphotoxin-beta isoform b is unable to complex with lymphotoxin-alpha suggesting a function for lymphotoxin-beta which

is independent of lymphotoxin-alpha. Alternative splicing results in multiple transcript variants encoding different isoforms. [provided by RefSeq, Jul 2008],

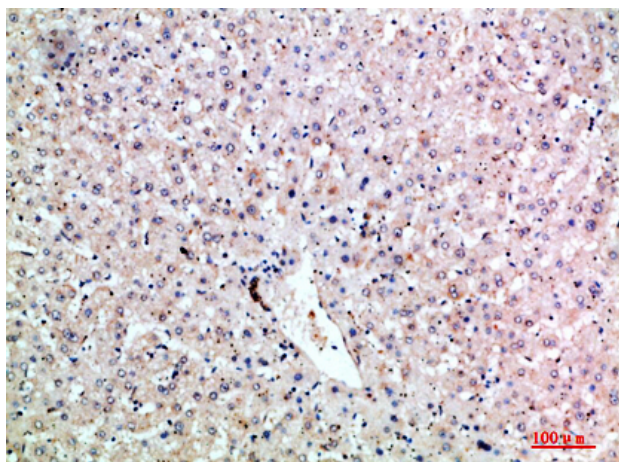
matters needing attention

Avoid repeated freezing and thawing!

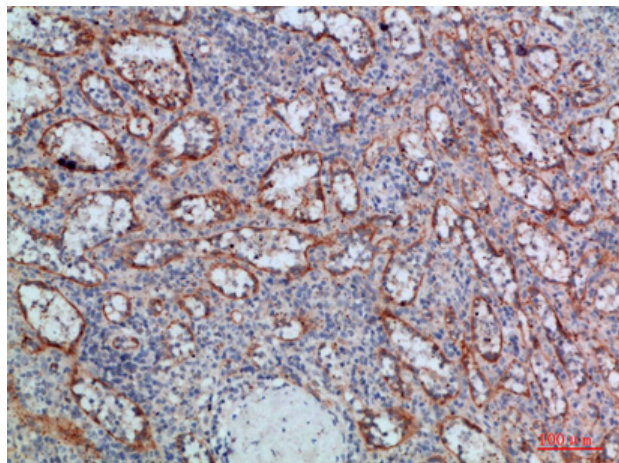
Usage suggestions

This product can be used in immunological reaction related experiments. For more information, please consult technical personnel.

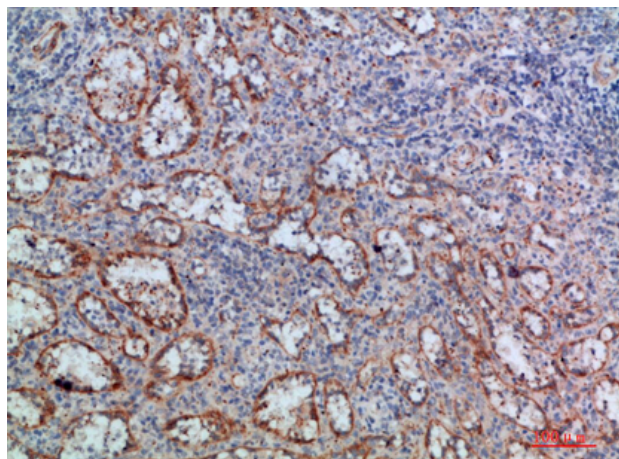
Products Images



Immunohistochemical analysis of paraffin-embedded human-liver, antibody was diluted at 1:200



Immunohistochemical analysis of paraffin-embedded human-spleen, antibody was diluted at 1:200



Immunohistochemical analysis of paraffin-embedded human-spleen, antibody was diluted at 1:200